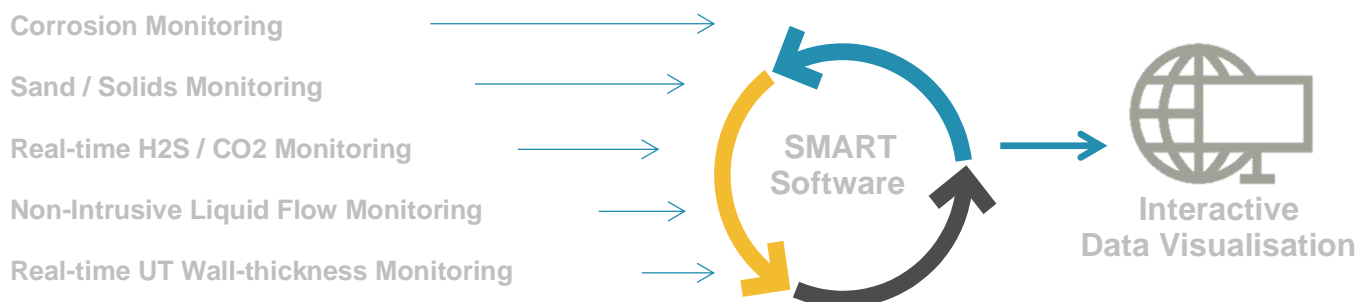




Well Test and Frac Operations Flow Assurance Monitoring Package



Increased Safety

- Reduces risk / personnel exposure to potentially harmful H2S samples.
- Reduces personnel exposure to high-risk area - wall thickness monitoring



Reduced Cost

- Realtime monitoring of multiple parameters allows well operations to continue, whilst monitoring the risk in real time.
- Reduced manual operations and onsite personnel requirement



Real Time Decision Making

- Reduced downtime through Instantaneous data analysis that allows faster more reliable decisions



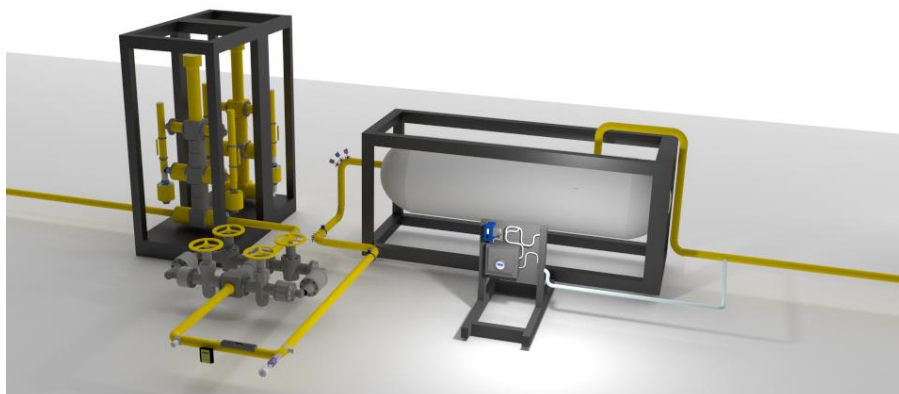
Solids Quantification

- Integration of flowmeter allows real time solids quantification
- Dual monitoring method that can deliver volumetric flow and flow velocity



Understand Your Well

- Measure frac fluid flowback
- Increased Real Time data allows instant, informed decision making



Sense



Understand



Perform

Well Test and Frac Operations: Flow Assurance Monitoring Package

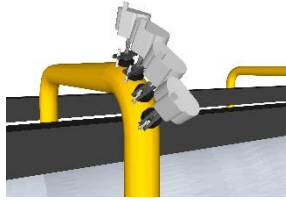
Sand, Erosion & Corrosion Monitoring



Acoustic & intrusive sensor packages provide instantaneous detection of solids production and when combined with flow monitoring provides solids quantification.

- | | |
|-------------------------|---|
| Increased safety | - Reducing risk and potential damage to plant |
| Reduced costs | - Data redundancy via two independent measurements |
| Continuous Data | - Instantaneous, data allows faster more reliable decisions |

Realtime UT Wall Thickness Monitoring



An array of installed real-time UT wall thickness sensors, measures absolute wall thickness, this monitors corrosion / erosion high-risk areas continuously.

- | | |
|-------------------------|--|
| Increased safety | - No requirement for personnel to inspect high-risk areas |
| Reduced costs | - No requirement for offshore manual operations |
| Continuous Data | - Real-time identification of wall loss at high-risk areas |

Realtime H2S & CO2 Monitoring



The Realtime H2S monitoring systems is a fully automated system capable of delivering real time H2S and Co2 measurements up to 40% volume.

- | | |
|------------------------------|--|
| Increased Safety | - Reduces risk / personnel exposure to harmful samples |
| Fully Automated | - Automated, minimum maintenance, infield calibration |
| Integration /Alarming | - Integration of data and alarms to acquisition system |

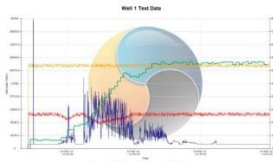
Portable Non-Intrusive Flow Monitoring



Portable Non-Intrusive liquid flowmeter, utilises a dual monitoring method that can deliver volumetric flow and flow velocity, suitable for high solids content

- | | |
|-------------------------------|--|
| Non-Intrusive | - Allows installation and repositioning whilst flowing |
| Fully Automated | - Automated, minimum maintenance, in-field calibration |
| Integration / Alarming | - Realtime integration into data acquisition system |

SMS SMART Data Visualisation



3D Data Visualisation and reporting delivers insight allowing decisions to be made based on real time contextual knowledge and data analysis

- | | |
|----------------------------|--|
| 3D Visualisation | - Intuitive data mapping and visualisation |
| Integrated Alarming | - Data and alarms fully integrated into acquisition system |
| Remotely accessed | - Data visibility through secure network access |