



# Real-Time H2S Monitoring



SMS provides H2S monitoring using best in class, field proven technology. After extensive testing of H2S monitoring systems, we identified the instrumentation to give our clients the edge they require.

## System Overview

SMS' real-time H2S monitoring system is an automated system, suitable for real-time monitoring gas hydrocarbon flow streams. A side stream setup, connected via small bore pipework, can be installed either temporarily or to permanent process pipework.



## Features

### Real-Time H2S Analysis

- Real-time monitoring of levels of H2S production up to 30% vol and 30 second to alarm status

### Robust Zone 2 Monitoring System

- Suitable for use in hazardous area

### Automated Monitoring System

- Fully automated system, requires minimal maintenance, infield calibration

### Data Integration

- Real-time integration to end user acquisition system or database

## Benefits

### Increased safety

- Reduced risk / personnel exposure to potentially harmful samples

### Intelligent Alarming

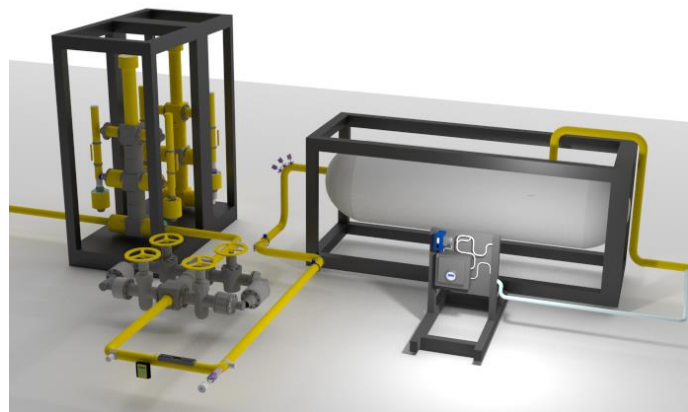
- Fully flexible alarm definition and transmit options

### Reliable and Repeatable Data

- No interference from other components of sample

### Remote Monitoring

- Save on manpower and offshore bedspace



Sense



Understand



Perform

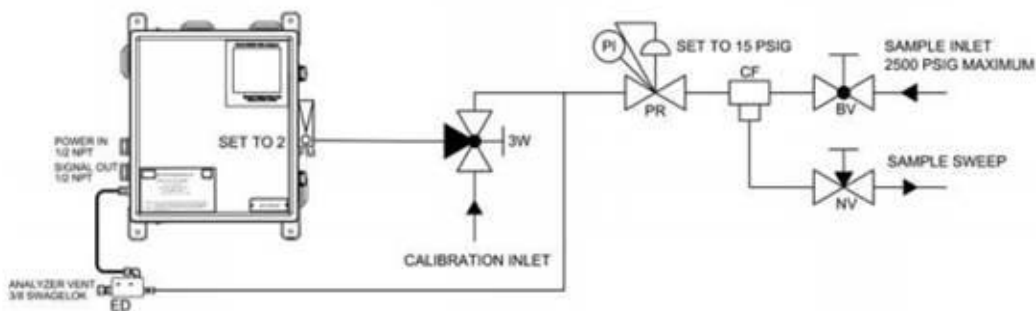
# Real-Time H2S Monitoring

## Specification

### Functional Characteristics

Analysis Technique .....	Lead Acetate Tape based technology that provides a linear and interference-free output
Data Output .....	H2S – ppm or %
Measurement Range .....	Dual range: 0-200ppm or 0%-0.02% & 0-300,000ppm or 0-30%
Max H2S Concentration .....	30% or 300,000ppm
Accuracy .....	+/- 1.5% of full-scale Standard Range ..... +/- 2.5% of full-scale High Range ..... +/- 1.5% repeatability
Calibration .....	Factory set calibration 3 monthly checks required
Reading Frequency .....	4-minute cycle
Data Interface .....	Real-time output direct into acquisition system
Maintenance .....	Monthly visual checks only
Power .....	12–24 VDC @ less than 3 watts or 100-240 VAC, 50/60Hz
Electrical Classification .....	Class I, Div 1, Grps B, C, & D certified to CSA standards.
Ambient Temperature .....	0 to 50°C (32 to 122°F) std. Contact for other requirements
Output Ranges .....	Standard Range: 0-200ppm. ..... High Range 0-300,000ppm (Utilising dilution system)
Response Time .....	30 Seconds to alarm
Outputs .....	Analogue: Dual isolated 4-20 mA (loop powered) ..... Digital: RS-485 Modbus
Displays .....	External graphic display 128 x 64
Interface .....	SMS SMART Software
Pipework Connections .....	Small bore e.g. ½ “Swagelok
Dimensions .....	Mounting panel built to spec ..... Monitoring unit: (60.96 W x 91.4H x 0.635L cm)

### Typical Set Up



**UK Head Office**  
Energy Development Centre  
Aberdeen Science & Energy Park  
Claymore Drive, Bridge of Don  
Aberdeen, Scotland AB23 8GD  
Tel: +44 (0) 1224 853 525  
Fax: +44 (0) 1224 707 999  
Email: info@smsintegrity.com

**Malaysia Office**  
SMS Sand Management SDN BHD  
26th Floor, Menara Maxis  
Kuala Lumpur City Centre  
50088 Kuala Lumpur, Malaysia  
Tel: +60 (0) 3 2615 2606  
Fax: +60 (0) 3 2615 2699  
Email: info@smsintegrity.com